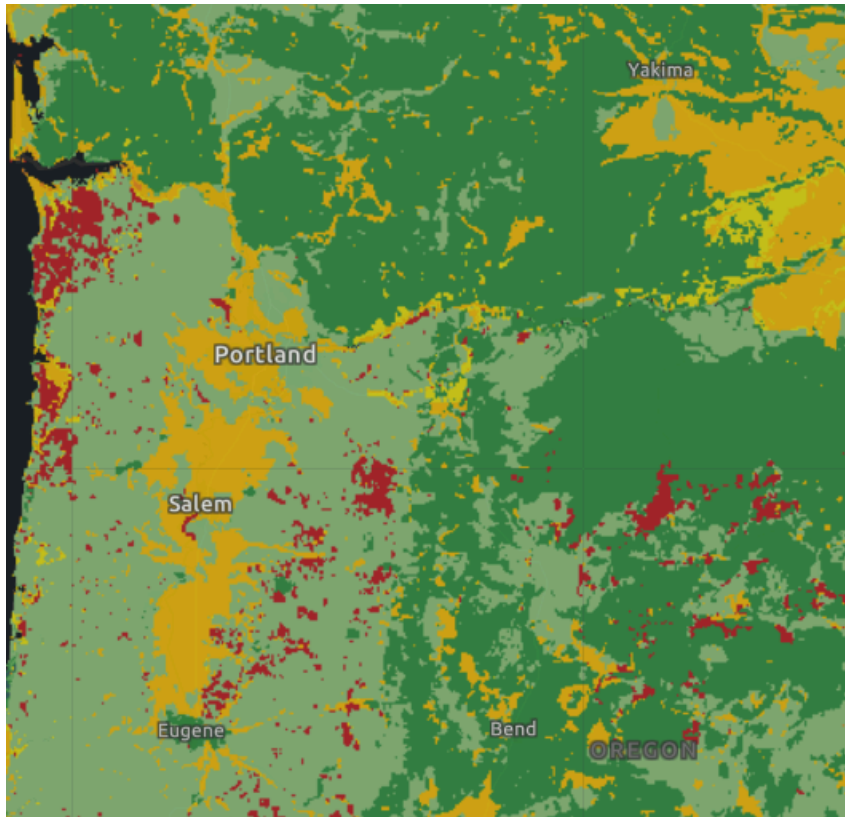


Vs30 and Geotechnical Data

The proposed building site is located at coordinates 45.524183, -122.674985. Lithologic information obtained from nearby locations in Geosetta, extending to a depth of approximately 30 m (100 ft), is summarized in Table 1. Additional geotechnical borehole data from adjacent sites are also available through the Geosetta Web Map (Geosetta Inc., 2025), https://geosetta.org/web_map/map/#18/45.52543/-122.67255.

Lithology Data from nearby site

Disclaimer: This geotechnical data is provided for informational purposes only. The information presented has been extracted from historical boring logs and may contain inaccuracies or incomplete data.

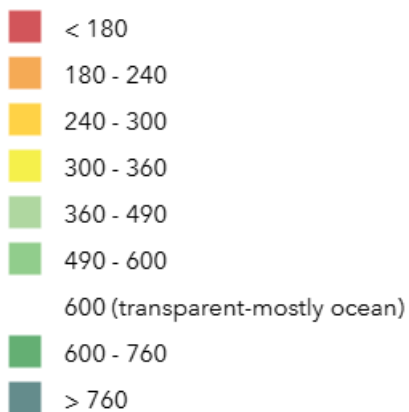


Legend

Vs30 Mosaic

Vs30 Mosaic

<VALUE>



Depth (Top) ft	Depth (Bottom) ft	Description
-	13.2	<<U>>FILL - SAND:<<U>> Well graded SAND with silt and gravel, silty SAND; SW-SM/SM; Red-brown/brown/light brown;

		nonplastic; moist; medium dense-dense; fine-coarse sand, rounded-subangular gravel; Includes AC surfacing and base aggregate at/near surface
13.2	17.0	<<U>>SAND - PUMICE:<<U>> Well graded SAND with silt; SW-SM; light brown; nonplastic; moist; very loose; fine to coarse sand; pumice tephra deposit
17.0	21.4	<<U>>SILT - UPPER LACUSTRINE:<<U>> SILT, silty SAND; ML/SM; brown; low plasticity; wet; soft to loose; fine to coarse sand, subrounded gravel; stratified
21.4	65.9	<<U>>SAND - LACUSTRINE-BEACH:<<U>> SAND, poorly graded SAND; SM/SP; dark brown/dark gray/black; nonplastic; wet; medium dense to very dense; fine to coarse sand; stratified; predominantly black fine sand (SP) with silt, sandy silt and silty sand
65.9	101.5	<<U>>SILT - LACUSTRINE:<<U>> Silty SAND, elastic SILT w/sand, well graded SAND w/silt, elastic SILT, lean CLAY, SILT, SILT w/sand; SM/MH/SW-SM/CL/ML; nonplastic-medium plasticity; wet; medium dense/very stiff-medium stiff; stratified and laminated

Table 1. Lithology data for a nearby site.

Reference

U.S. Geological Survey. "USGS Map Viewer." Accessed November 18, 2025.

<https://usgs.maps.arcgis.com/apps/webappviewer/index.html?id=8ac19bc334f747e486550f32837578e1>

Geosetta Inc. 2025. *Geosetta Web Map*. Interactive map.

https://geosetta.org/web_map/map/#18/45.52543/-122.67255